



INVESTMENT OPPORTUNITIES OF JETYSU REGION



JETYSU REGION



GENERAL INFORMATION



Area

118,5 thousand km²



Population

650 000 (est.) people



Territorial division

The region consists of 8 districts and 2 cities of regional subordination



Regional center

Taldykorgan city

TOP-4 PRIORITY SECTORS:



Agriculture



Renewable power sources



Tourism



Processing industry

● Область Жетысу

Алакольский

Саркандский

Каратальский

Аксуский

г.Талдыкорган

Ескельдинский

Коксуский

г.Текели

Кербулакский

Панфиловский

● Алматы



INVESTMENT PORTFOLIO OF JETYSU REGION

INVESTMENT PORTFOLIO OF JETYSU REGION 2022-2030

 **270**
projects

 **1 704**
bln

 **14 000**
working places

ONGOING PROJECTS

 **177**
projects

 **1 299**
bln

 **9 000**
working places

**WITH FOREIGN
PARTICIPATION**

 **8**
projects

 **770,2**
bln.

 **3 700**
working places

PROJECTS SCHEDULED FOR COMMISSIONING IN 2022

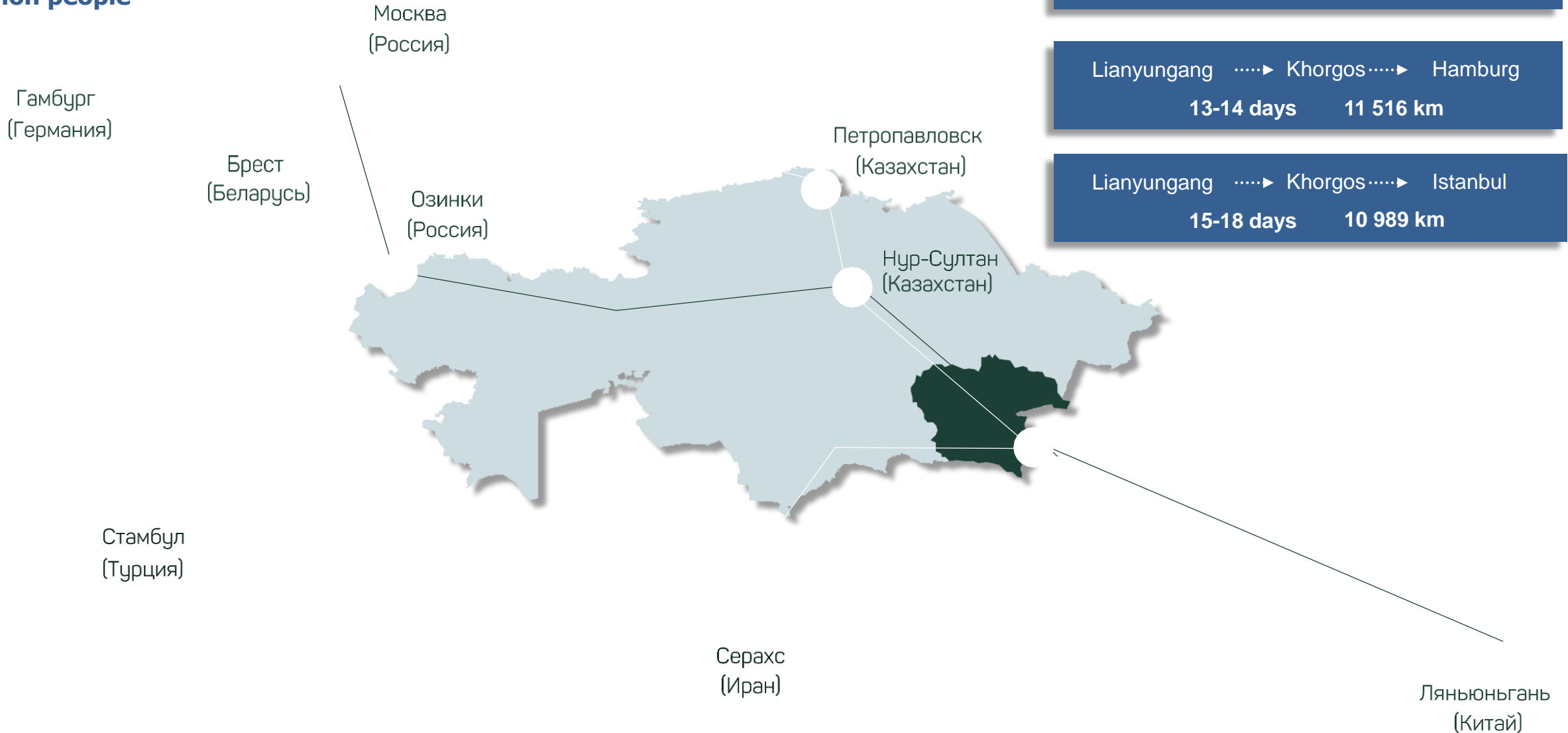
 **53**
projects

 **49**
bln

1 200
working places

TRANSIT POTENTIAL

The possibility of entering the EAEU market with a population of over 183 million people



«KHORGOS – EASTERN GATES» SEZ

4 591 ha
Area

129,8 га
«Dry port» TLC

224,4 га
Industrial zone

224,9 га
Logistic zone

4 012,4 га
Reserved area

ELECTRICITY SUPPLY
40 mW/h

WATER SUPPLY
2 900
m3/sec

RAILWAYS
24 km



INCENTIVES

100%

0%

Land tax

0%

Property tax

NO RENT

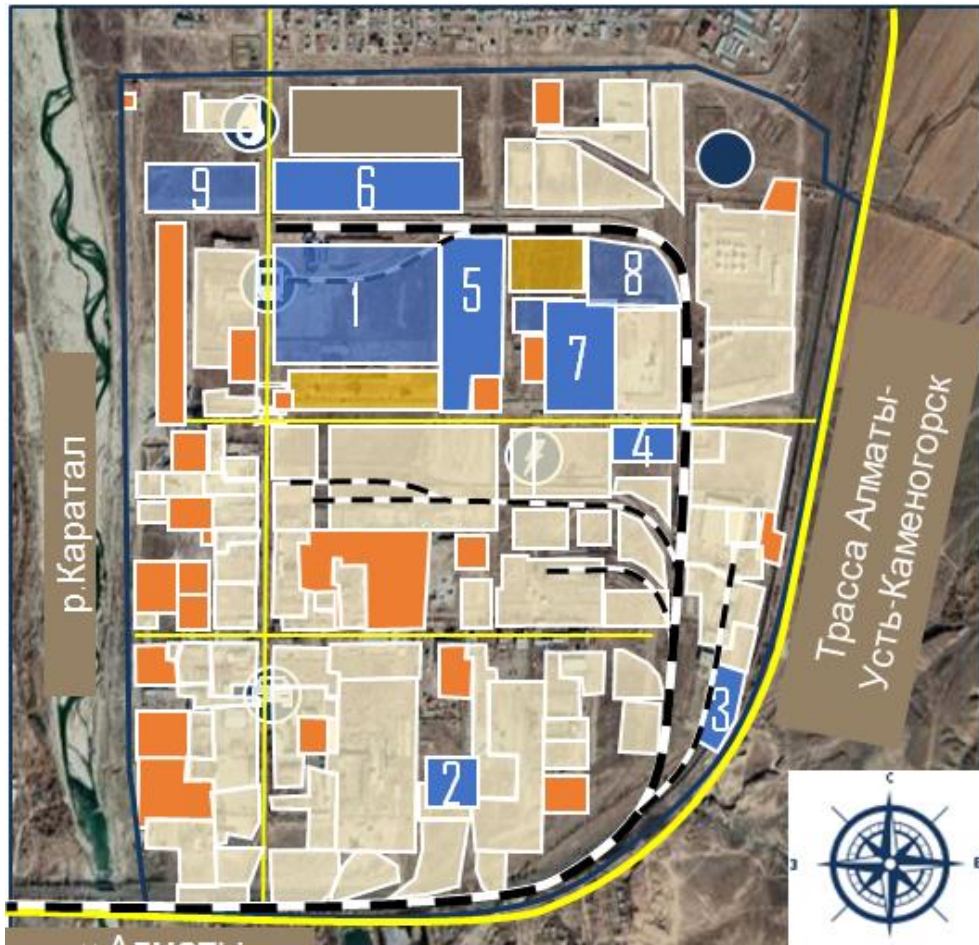
on land plots for the medium-term period

**FREE CUSTOMS
ZONE**

«TALDYKORGAN» INDUSTRIAL ZONE

595 ha
Total area

35 ha
Free area



Current projects

6

Ongoing projects

2

Amount of ongoing projects
12
bln.tenge

Created working places

300

AVAILABLE CAPACITIES



ELECTRICITY
2 x 40 000
kV



WATER SUPPLY
18 000
m³/day



WATER DISPOSAL
14 000
m³/day



GAS SUPPLY
5 000 m³/h



NETWORKS
19,4
km



RAILWAYS
15 wagons/day



ROADS
9,7 km



STREET LIGHTING
4,3 km



TILL AIRPORT
15 km



TILL ALMATY
240
km

LIST OF JETYSU REGION PROJECTS, REQUIRING ADDITIONAL FINANCING

**«Tekesu Outdoor Center» LLP - construction of a year-round
tourist ski center
Tekeli city**

Cost

25 bln.tenge
30% own,
70%-the need for investor funds

Capacity

15 000 visitors per year

Working places

100 people

Land plot

12 000 ha

**“Virshki Igor Alikovich” SE- construction and maintenance of a
cable car, a sports and tourist recreation center
Eskeldy district**

Cost

600 mln.tenge

100%-the need for investor funds

Capacity

6 000 visitors per season

Working places

50 people

Land plot

14 100 ha

“Phoenix company” LLP- construction of a health and sports center on the Alakol Lake shore

Cost

4,2 bln.tenge

100% -the need for investor funds

Capacity

800 cottages (120 sq.m.) and 600 studio apartments

Working places

60 people

Land plot

20 ha

«Shokai Best» LLP- construction of a sanatorium-tourist-wellness center on the Alakol lake shore

Cost

6,3 bln.tenge

100% -the need for investor funds

Capacity

90 000 tourists per year,
400 places

Working places

120 people

Land plot

4 ha

«Zharkent fruits» LLP - construction of a fruit storage facility and a plant for processing fruit and berry crops Panfilov district

Cost

9 bln.tenge

100% -the need for investor funds

Capacity

Elevator for **8,000** tons of one-time storage of soybeans. Plant from **3 tons/hour** (soybean cake and oil)

Working places

50 people

Land plot

1 100 ha existing garden

**«NUR-BIRLIK» SEC - development of animal husbandry
using Amaranth forage culture
Panfilov district**

Cost

8,1 bln.tenge

100% -the need for investor funds

Capacity

60 thousand tones per year

Working places

150 people

Land plot

296 ha

“Boztogan Agro” LLP- dairy farm construction Koksu district

Cost

1,2 bln.tenge

100% -the need for investor funds

Capacity

2,2 mln. liters per year

Working places

30 people

Land plot

350 ha

**«AGROPARK QAZYNA» LLP - creation of a technological
agropark for the production of livestock and crop
production
Aksu district**

Cost

945,7 mln.tenge
15%-own funds,
85% -the need for investor funds

Working places

74 people

Capacity

**15 thousand heads per year
development of 680 hectares of
irrigated land**

Land plot

830 ha

“Kausar Agro” LLP- creation of a poultry complex for the cultivation of broilers Kerbulak district

Cost

41 bln.tenge

Capacity

14,000 tons of broiler meat, **3,000** tons of offal per year

Working places

750 people

Land plot

400 ha

"Agricole" LLP - cultivation, harvesting and processing of oilseed crops Alakol district

Cost

7 bln.tenge

Capacity

73 000 tones per year

Working places

120 people

Land plot

to be defined

“Bekzat” LLP- construction of a hydro power station on the Koksu river Koksu district

Cost

4,2 bln.tenge

Capacity

7 MW

Working places

15 people

Land plot

32 ha

SOCIAL FACILITIES OF JETYSU REGION

1

CONSTRUCTION OF A HEALTH CAMP FOR CHILDREN from socially vulnerable segments of the population for 120 places in Taldykorgan city. **Investments: 2.8 billion tenge** (*DED available*)

2

IT SCHOOL CONSTRUCTION FOR 150 STUDENTS with a hostel for 100 students and sports grounds in the eastern part of Taldykorgan city. **Investments: 4.3 billion tenge**

3

OVERHAUL OF A SUBURBAN CHILDREN'S CAMP in Taldybulak village, Kerbulak district. **Investments: 382.9 million tenge.**

4

CONSTRUCTION OF A NEW BLOCK with seismic amplification of the existing blocks of the State Utility Enterprise on the "**Regional Oncological Dispensary**" *REM* in Taldykorgan. **Investments: 4 billion tenge** (*DED is under development*).

5

CONSTRUCTION OF A MEDICAL CENTER for 10 visits per shift in the village. Kengaryp Aksu district, **cost 114.3 million tenge.**

6

FIRST-AID STATION CONSTRUCTION for 15 visits per shift in Kamyskala village , Alakol district, **cost 153.6 million tenge.**

7

CONSTRUCTION OF A SPORTS COMPLEX FOR A CLIMBING WALL AND RHYTHMIC GYMNASTICS in accordance with international standards in the city of Taldykorgan, **cost of the project is 1 billion tenge.**

8

CONSTRUCTION OF A MODULAR FOOTBALL ARENA (*DED is not required*), **the cost of the project is 4 billion tenge**